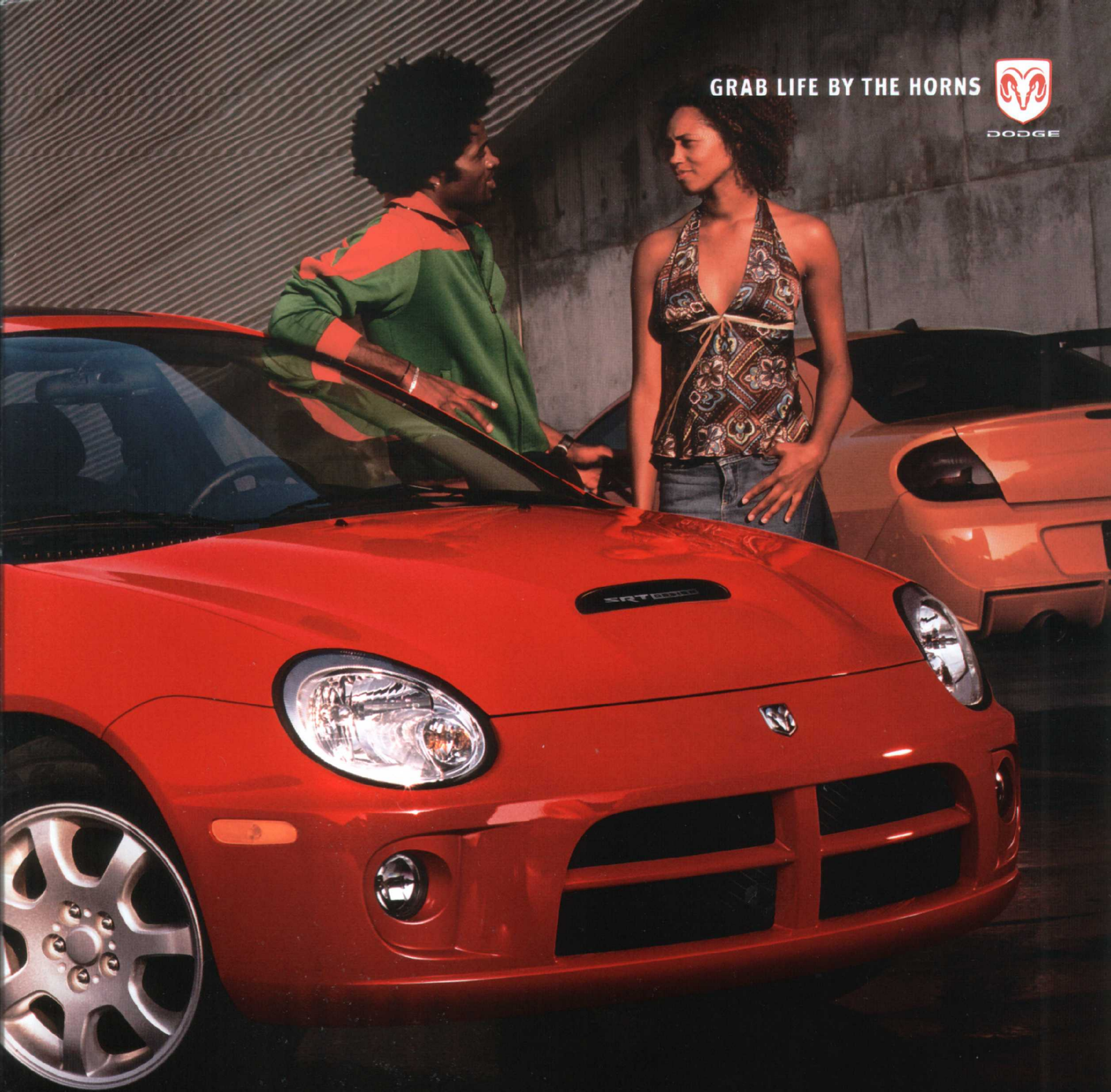


GRAB LIFE BY THE HORNS



DODGE



2005 DODGE

SX 2.0/SRT4



**STREET SMART PERFORMANCE
RUNS IN THE FAMILY.**



SX 2.0 SPORT SHOWN IN BRIGHT SILVER METALLIC WITH OPTIONAL CHROME ALUMINUM WHEELS. SRT4 SHOWN IN BLACK WITH OPTIONAL POWER SUNROOF. Dodge SX 2.0 and SRT4; two distinctly different vehicles that send one clear message: Dodge makes awesome cars. SRT4 is the fastest car in its class under \$28,000.* Right out of the factory, it's the "blank canvas" that lets you build the high-performance street machine of your dreams. SX 2.0 is first off the starting line when it comes to value. And SX 2.0 Sport commands respect without commanding fat chunks of your salary. Whichever model you choose, style, energy and fun are standard. Read on and you'll see why. Then, hit the Internet and pull up at dodge.ca to learn more.

*Based on 0-60 mph (0-96 km/h) acceleration time.



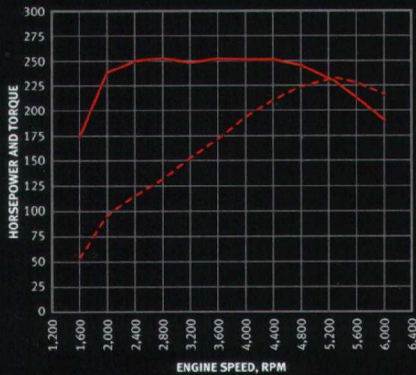
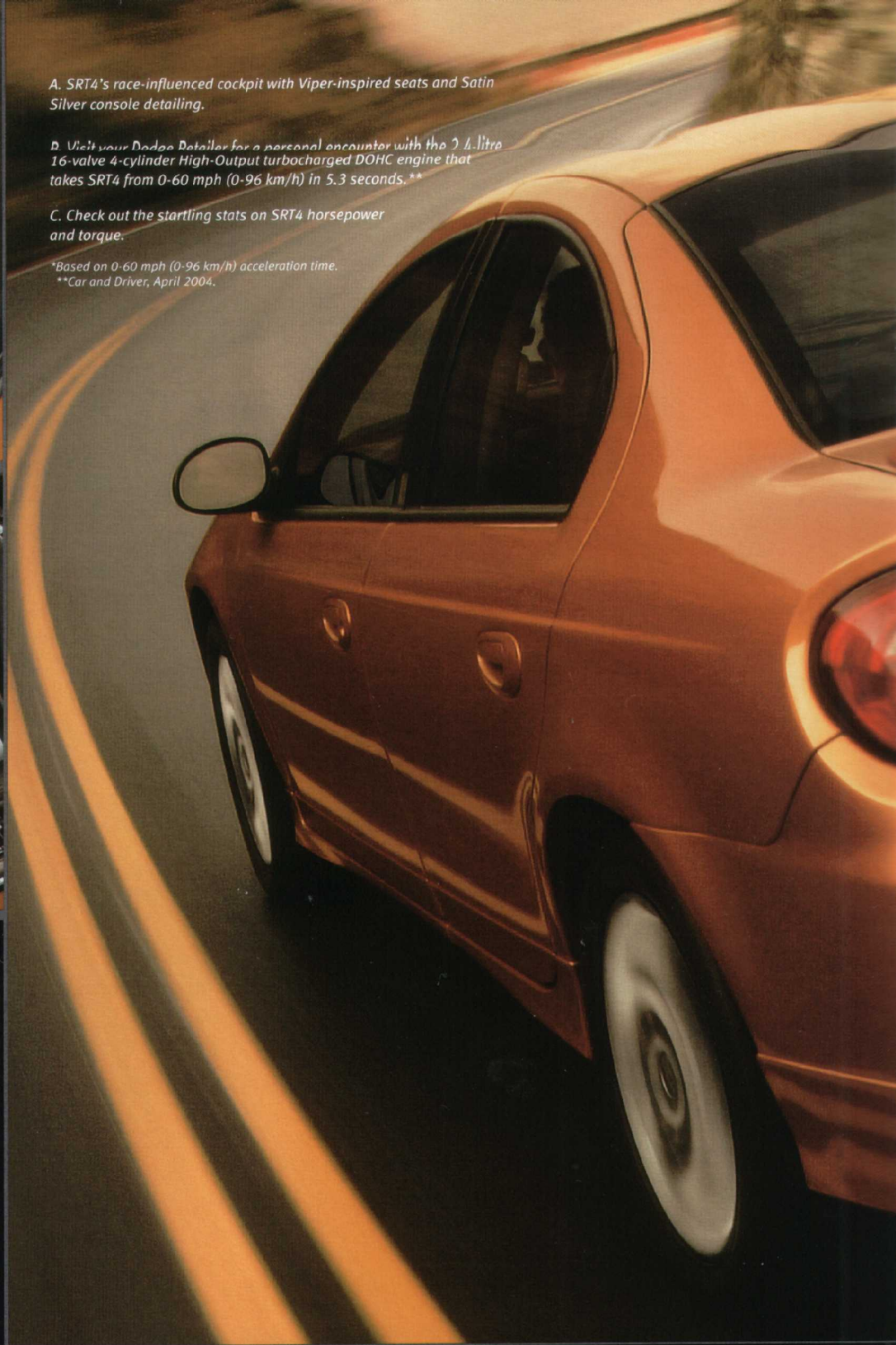
A. SRT4's race-influenced cockpit with Viper-inspired seats and Satin Silver console detailing.



B. Visit your Dodge Dealer for a personal encounter with the 2.4-liter 16-valve 4-cylinder High-Output turbocharged DOHC engine that takes SRT4 from 0-60 mph (0-96 km/h) in 5.3 seconds.**

C. Check out the startling stats on SRT4 horsepower and torque.

*Based on 0-60 mph (0-96 km/h) acceleration time.
 **Car and Driver, April 2004.



■ 2.4L TURBO I-4 ENGINE
 230 horsepower @ 5,300 rpm
 250 lb-ft of torque @ 2,400-4,400 rpm
 --- Horsepower
 --- Torque

**SRT4. LIFE MOVES FAST.
 YOUR RIDE SHOULD TOO.**



SRT4 SHOWN IN ORANGE BLAST PEARL COAT. In the race to outrun boredom, Dodge SRT4 rocks with a turbocharged 2.4-litre DOHC 16-valve 4-cylinder High-Output Turbo engine that delivers the blazing power you want plus the fuel economy you need. The exhaust system has no muffler, which means less back pressure and great sound. Result: 230 horsepower at 5300 rpm and 250 pound-feet of torque between 2400 and 4400 rpm. If you guessed the 280 km/h (170 mph) speedometer wasn't just for show, you're right. In fact, SRT4 is the fastest car in its class under \$28,000.* Well-behaved, too. Quaife® automatic torque biasing (ATB) limited-slip differential senses which wheel has the better grip and smoothly "biases" power to that wheel without ever completely removing power from the other. High-tech brakes are along for the ride too; ready to bring the good times to a stop in a hurry. Shift into high gear and get the rest of the SRT4 story at dodge.ca.

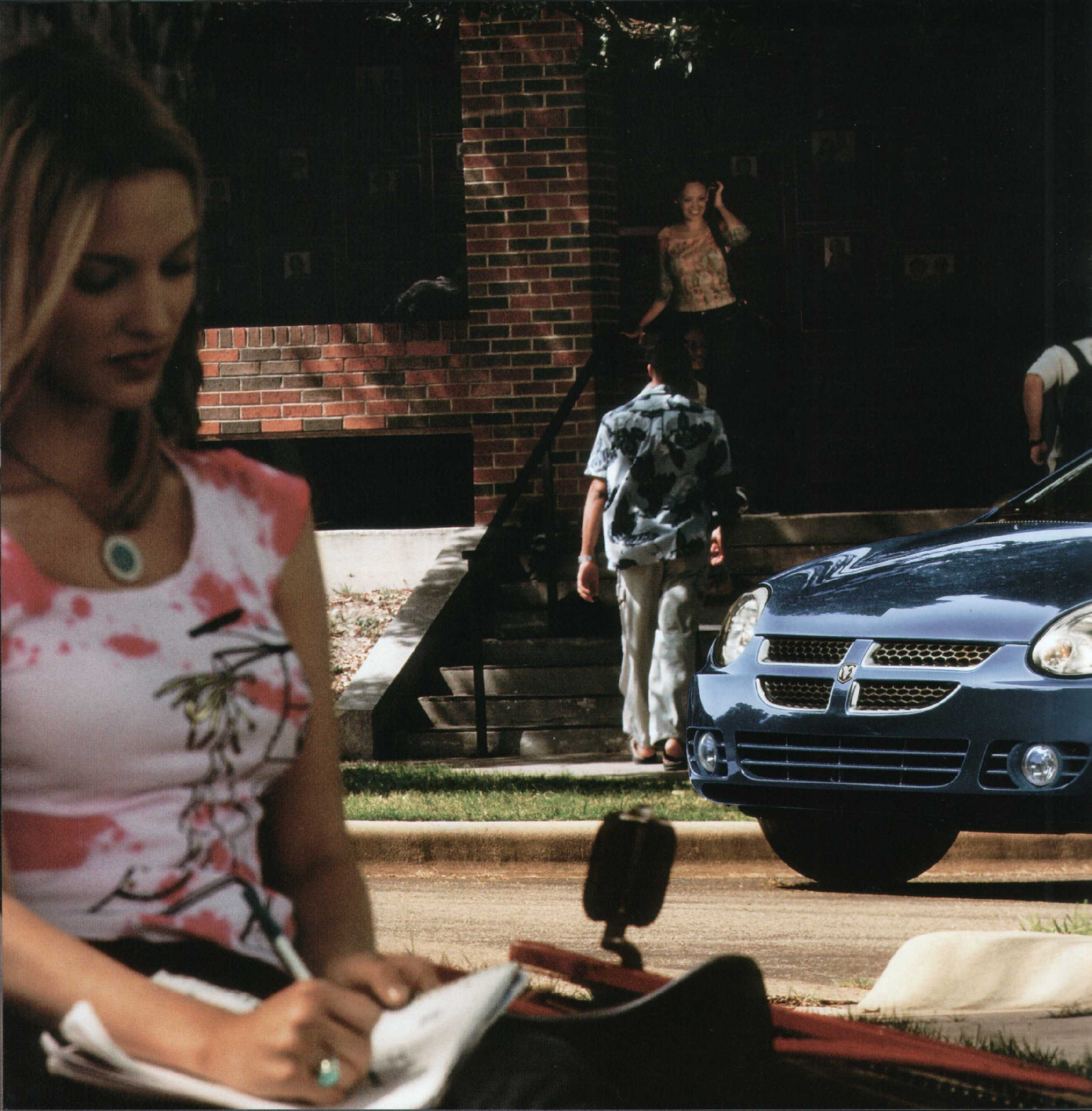
*Based on 0-60 mph (0-96 km/h) acceleration time. Quaife is a registered trademark of Quaife Engineering Limited Corporation.



**SRT DESIGN GROUP. PREMIUM EXTRAS
WITHOUT THE PREMIUM PRICE.**



SX 2.0 WITH SRT DESIGN GROUP SHOWN IN BLACK. Okay, so you want the high-performance look of the SRT4 and the budget-friendly value of the base model. Check out the new SRT Design Group (available on SX 2.0 and SX 2.0 Sport models). This package is heavy on the eye candy, adding an SRT4 power-bulge hood, rear spoiler, unique front and rear fascias, dual bright exhaust tips and 15-inch aluminum wheels. It's a great-looking package that's easy on the eyes and easy on the budget. For a closer look, cruise on over to dodge.ca.



**SX 2.0. PROOF THAT BEAUTY AND INTELLIGENCE
CAN COME IN THE SAME PACKAGE.**



SX 2.0 SHOWN IN MIDNIGHT BLUE. Looks can say a lot. SX 2.0's looks speak volumes, even when the conversation turns to paint. These eye-catching colours work hard at more than just looking good. One of the eight paint coats is an elastic antichip primer that works like a "shock absorber" to help reduce damage that can be caused by road blast and other debris. SX 2.0 beauty is more than skin deep. Beneath the hood, a 2.0-litre SOHC 16-valve 4-cylinder engine cranks out 132 horsepower and 130 pound-feet of torque. Your homework: research the rest of the value story at dodge.ca.



A.



B.



C.

A. Available in-dash 6-disc CD player and six speakers.

B. The aptly named and soon-to-be-notorious Kicker/
SRT Livin' Loud Audio System, optional on SRT4.

C. Trunk space expands with "pass-through" by folding
down one or both sides of the 60/40 split-folding
second-row bench seat.

**IF YOU'RE INTO MUSIC AND STUFF,
YOU'LL LIKE THE SOUND OF THIS.**



SX 2.0 SPORT INTERIOR SHOWN IN DARK SLATE GREY. By now you know SX 2.0 is built to fit real life and real-life wallets. For road trips or shopping trips, you've got all the space you need. There's 371 litres (13 plus cubic feet) of room in the trunk alone. And the 60/40 split-folding second-row bench seat adapts in seconds to handle long stuff, like skis, paddles or guitars. Stow CDs in the console, maps in the door pockets, and cups in all four cup holders. But the biggest thing you can carry is sound, thanks to the standard AM/FM stereo radio with CD player, CD changer controls and six speakers. You can also crank it up with an optional system that adds a 6-disc in-dash CD changer for hours of uninterrupted driving tunes. Hear what other cool features we've built into SX 2.0 at dodge.ca.

FRONT AND SIDE AIR BAGS* — In addition to front air bags, available supplemental side air bags (deployed from front seat) offer protection in the event of side collision.

CRUMPLE ZONES — SX 2.0 and SRT4 are prepared to absorb impact from front or rear, while concealed steel rail construction distributes received force in such a way as to help protect vehicle occupants.



PEACE OF MIND IS PART OF THE DEAL, TOO.

3-POINT LAP/SHOULDER SEAT BELT SYSTEM FOR ALL PASSENGERS INCLUDING REAR CENTRE-SEAT OCCUPANTS — Designed to hold all five occupants securely in place during impacts. Constant-force retractors on front belts “give” in a controlled manner to decrease belt impact.



Dodge cars with available 4-wheel anti-lock brakes have the sophisticated advantage of adapting to unpredictable road conditions. The upshot is that you'll enjoy great handling when the weather is not so great.



Beneath all the style, performance and attitude of Dodge SX 2.0 and SRT4 are some serious safety features that let you cruise with confidence no matter where you're headed. In addition to the features described above, 4-wheel disc anti-lock brakes are optional on SX 2.0 and SX 2.0 Sport and standard on SRT4, another important feature you won't find available on many cars in this price range. When little ones are along for the ride, standard built-in child seat tether anchors are ready for action. And while all that's going on, a standard Sentry Key™ Theft Deterrent System is on duty to help keep the driving enjoyment all yours. Buckle up and follow the signs to learn more about the SX 2.0 and SRT4 safety story at dodge.ca.

*Certified to federal regulations that allow less forceful front air bags. Always use seat belts. Children 12 and under should always be in a back seat correctly using an infant or child restraint system, or the seat belt properly positioned, dependent on the child's age and weight.

EVERY DODGE SX 2.0 AND SRT4 INCLUDES...

- Air Bags*** – Next-Generation, driver and front-passenger
- Brake-Park Interlock** – Cannot shift out of Park unless brake pedal is depressed (SX 2.0 with automatic transmission)
- Child-Seat Anchor System (LATCH)** – Lower Anchors and upper Tether anchors for Child seats
- Clutch-Starter Interlock** – Cannot start engine until clutch is depressed (manual transmission)
- Coat Hooks** – Rear, two
- Console** – Floor – Storage armrest, cup holders, coin holder, front cubby box, cassette and CD storage, tissue pack holder and integral cup holder for rear-seat passengers
- Cup Holders** – Front, three; rear, one
- Defroster** – Rear-window, electric
- Door Handles** – Body-colour
- Door Locks** – Rear, child-protection
- Engine Block Heater** (except SRT4)
- Exhaust System** – Long-life stainless steel
- Fog Lamps** – Front
- Fuel Tank** – 47-litre (10.4 imp. gal.)
- Glass** – Tinted, all windows including solar-control windshield
- Glove Box** – With integral pen and tire-pressure gauge holder
- Instrument Cluster** – Speedometer, tachometer, odometer, trip odometer, fuel and engine temperature gauges and low-fuel warning light (also turbo-boost gauge on SRT4)

- Lighting**
 - Exterior – Halogen headlamps
 - Interior – Dome with theatre-dimming feature, trunk lamp

Map Pockets – Front doors

- Mirrors**
 - Exterior – Driver's side remote, passenger's side manual
 - Interior – Day/night, rearview
 - Dual visor-mounted vanity

Power Accessory Outlet – 12-volt, located in instrument panel

Seating – 60/40 split-folding rear seatbacks; two built-in rear head restraints

Sentry Key™ Engine Immobilizer – With two encoded keys

Shoulder Belts

- Front – Height-adjustable outboard with travelling buckles
- Rear – 3-point lap/shoulder for all rear-seat passengers

Steering – Power, rack-and-pinion

Steering Column – Tilt

Tire – Spare, compact

Trunk-Lid Release – Emergency inside-trunk glow-in-the-dark release

Wiper System – Windshield, 2-speed with variable intermittent mode and mist

*Certified to federal regulations that allow less forceful front air bags. Always use seat belts. Children 12 and under should always be in a back seat correctly using an infant or child restraint system, or the seat belt properly positioned, dependent on the child's age and weight.

POWERTRAIN AVAILABILITY

- 2.0L 4-cylinder SOHC 16V SMPI – 5-speed manual
- 2.0L 4-cylinder SOHC 16V SMPI – 4-speed automatic
- 2.4 L 4-cylinder DOHC 16V SMPI intercooled turbo – T850 5-speed H.D. manual with Quaife®-developed, torque-sensing, limited-slip differential

INTERIOR/COMFORT/CONVENIENCE

- Air Conditioning**
- Assist Handles** – Overhead for front and rear outboard passengers (included with Power Sunroof Group)
- Door Locks** – Power with automatic central locking and owner-programmable rolling autolock (included in Security Group or Driver Convenience Group)
- Driver Convenience Group** – Includes dual, power, exterior mirrors, Remote Keyless Entry, power trunk-lid release, power door locks and power front windows
- Instrument Panel Centre Bezel**
 - Dark Grey, textured appearance
 - Body-colour (Satin Silver with Black exterior and on SRT4) (see also SRT Design Group)
- Mirrors**
 - Interior – With reading lamps (included with optional power sunroof on Base SX 2.0)
 - Interior – With reading lamps and compass and ambient temperature read-out (included only with Leather Interior Group)
- Power Trunk-Lid Release** – (Included with Driver Convenience Group and Security Group on Base SX 2.0)
- Remote Keyless Entry** – Controls for door locks, panic alarm, and trunk release. Includes two transmitters (Included in Security Group or Driver Convenience Group)
- Seats**
 - Cloth-faced, low-back front buckets with 2-way adjustable head restraints
 - Leather-faced, low-back front buckets with 2-way adjustable head restraints (included in Leather Interior Group)
 - Sport cloth, Viper-style highback front seats
- Sound System**
 - AM/FM stereo with CD player, CD changer controls and six speakers
 - AM/FM stereo with cassette, CD changer controls, 6-disc in-dash CD changer and six speakers
 - Kicker/Livin' Loud audio with 178 watt amplifier, in-dash 6-CD changer; six speakers (amplified subwoofer)
- Speed Control** – Electronic with steering wheel stalk-mounted controls
- Steering Wheel and Shift Knob** – Leather-wrapped
 - Leather wrapped steering wheel with simulated carbon-fibre accent, plus satin-silver cue ball shift knob
- Windows** – Front, power (included in Driver Convenience Group)

	PACKAGES		
	SX 2.0	SX 2.0 Sport	SRT4
	21D	21G	
	24D	24G	
			25M
Air Conditioning	O	S	S
Assist Handles	P	P	P
Door Locks	P	S	S
Driver Convenience Group	O	S	S
Instrument Panel Centre Bezel			
– Dark Grey, textured appearance	S		
– Body-colour (Satin Silver with Black exterior and on SRT4) (see also SRT Design Group)	P	S	S
Mirrors			
– Interior – With reading lamps (included with optional power sunroof on Base SX 2.0)	P	S	S
– Interior – With reading lamps and compass and ambient temperature read-out (included only with Leather Interior Group)		P	
Power Trunk-Lid Release	P	S	S
Remote Keyless Entry	P	S	S
Seats			
– Cloth-faced, low-back front buckets with 2-way adjustable head restraints	S	S	P ⁽¹⁾
– Leather-faced, low-back front buckets with 2-way adjustable head restraints (included in Leather Interior Group)		P	
– Sport cloth, Viper-style highback front seats			S
Sound System			
– AM/FM stereo with CD player, CD changer controls and six speakers	S	S	S
– AM/FM stereo with cassette, CD changer controls, 6-disc in-dash CD changer and six speakers	O	O	
– Kicker/Livin' Loud audio with 178 watt amplifier, in-dash 6-CD changer; six speakers (amplified subwoofer)			O
Speed Control	O	S	
Steering Wheel and Shift Knob		S	
– Leather wrapped steering wheel with simulated carbon-fibre accent, plus satin-silver cue ball shift knob			S
Windows	P	S	S

ABOUT THIS CATALOGUE: Since the time of printing, some of this information may have been updated. Ask your retailer for details before ordering. Some of the equipment shown or described throughout this catalogue is available at extra cost. Dodge is a registered trademark of DaimlerChrysler Canada Inc., a wholly owned subsidiary of DaimlerChrysler Corporation.



CONT.

	PACKAGES		
	SX 2.0	SX 2.0 Sport	SRT4
SAFETY/SECURITY			
Air Bags* – Supplemental side for front occupants	0	0	0 ⁽¹⁾
Security Alarm – Security system monitors doors, trunk-key cylinder and ignition		S	S
Security Group – Remote Keyless Entry, power door locks, power trunk release	0	S	S
EXTERIOR			
Exhaust			
– Stainless Steel	S	S	S
– Dual, bright tips (in SRT Design Group)	P	P	S
– Mufflerless performance system			S
Fascias, Mouldings			
– Fascias – Body colour; front with chrome accents on grille	S	S	
– Sport front and rear fascias, side-sill spoilers – Body-colour (Included in SRT Design Group)	P	P	S
Hood – Power bulge (included in SRT Design Group)	P	P	S
Mirrors – Exterior – Dual, power (included with Driver Convenience Group)	P	S	S
Power Sunroof – Includes express-open and vent features, sliding sunshade, and assist handles (adds mirror-mounted reading lamps on Base SX 2.0)	0	0	0
Spoiler – Trunk lid-mounted (High SRT4 style included in SRT Design Group and on SRT4)	0/P	S/P	S
SRT Design Group – Includes unique front and rear fascias, hood with power bulge, high trunk lid-mounted spoiler (SRT4 style), dual bright exhaust tips, 7-spoke 15-inch aluminum wheels, deletes bodyside mouldings. Also adds body-colour instrument panel bezel on base model (Satin Silver with Black exterior)	0	0	
Wheels and Tires			
– 14-inch steel with bolt-on wheel covers, P175/70R14 BSW All-Season Touring tires	S		
– 15-inch aluminum wheels, P185/60R15 BSW All-Season Touring tires (style varies with application)	0/P	S	
– 15-inch chrome aluminum wheels, P185/60R15 BSW All-Season Touring tires		0	
– 17-inch, aluminum wheels, P205/50 ZR17 speed-rated, Performance tires			S
PERFORMANCE/FUNCTIONAL			
Brakes			
– Power-assisted front disc/rear drum	S	S	
– 4-wheel disc anti-lock (Anti-lock Brake Group) with electronically variable brake proportioning	0	0	S
– Performance discs, red powder-coated calipers, front and rear			S
Suspension			
– MacPherson strut front with stabilizer bar, multilink rear	S	S	S
– Lowered, Tokico-tuned, springs, shocks, front and rear, upgraded front stabilizer bar, added rear stabilizer bar			S

P – Packaged with optional group noted S – Standard 0 – Optional *Always use seat belts. Children 12 and under should always be in a back seat correctly using an infant or child restraint system, or the seat belt properly positioned, dependent on the child's age and weight. Sentry Key is a trademark of DaimlerChrysler Corporation. Mopar is a registered trademark of DaimlerChrysler Corporation. Quaife is a registered trademark of Quaife Engineering Limited Corporation.



14-inch Bolt-on Wheel Cover
standard on Base



15-inch Cast Aluminum Wheel
optional on Base, included in SRT Design Group



15-inch Cast Aluminum Wheel
standard on Sport



15-inch Cast Aluminum Chrome Wheel
optional on Sport



17-inch Cast Aluminum Wheel
standard on SRT4

ENGINE SPECIFICATIONS

	2.0L	2.4L
Net Power – kW (hp) @ rpm	98 (132) @ 5600	172 (230) @ 5300
Net Torque – N-m (lb-ft) @ rpm	176 (130) @ 4600	339 (250) @ 2400

DIMENSIONS

Wheelbase – mm (in.)	2667 (105.0)
Overall Length – mm (in.)	4430 (174.3)
Width at Body – mm (in.)	1712 (67.4)
Height – mm (in.)	1422 (56.0)
Luggage Capacity – L (cu. ft) ⁽¹⁾	371 (13.1)
Seating Capacity	5

⁽¹⁾Increased capacity with rear seats folded. Properly secure all cargo.

Specifications, descriptions and illustrative material contained herein are based on authorized information. Although specifications, descriptions and illustrations were believed to be correct at the time this publication was approved for printing, accuracy cannot be guaranteed. DaimlerChrysler Canada Inc. reserves the right to discontinue models or options at any time or change specifications and materials, equipment or design without notice and without incurring obligation. Some equipment may not be exactly as illustrated in this publication. Some of the equipment listed, described, or illustrated herein may not be standard, and may be available only at extra cost, as factory-installed or retailer-installed; items described as "available" may be standard on some models and optional, or not available, on others. Equipment referred to as "available" or "optional" may be at extra cost. Some options are required in combination with other options. For the price of the model with the equipment you desire or verification of specifications and equipment availability contained herein, see your Chrysler, Jeep, Dodge Retailer. Cummins is a registered trademark of Cummins Engine Company, Inc.

Colour availability may vary by model. Due to printing limitations, the colours shown here and throughout this catalogue may vary slightly from the actual hue. See your retailer for model applications and to view accurate colour chips.

©2004 DaimlerChrysler Canada Inc. All rights reserved.

⁽²⁾Viper-style highback front seats replaced with lowback seats with adjustable head restraints on SRT4 equipped with optional side air bags.



Midnight Blue Pearl Coat

Electric Blue Pearl Coat

Stone White

Orange Blast Pearl Coat



2005 Chrysler, Jeep® and Dodge vehicles are backed by a 5-year or 100,000-kilometre* fully-transferable Powertrain Warranty with \$0 deductible, plus 24-hour roadside assistance.† Basic Warranty coverage is for 3 years or 60,000 kilometres.* Rust-through coverage on all body sheet metal is for 3 years. The Cummins® Turbo Diesel engine is protected by a separate Limited Warranty, covering the engine for 5 years or 160,000 kilometres.*

*Whichever comes first. †Some conditions may apply. The 5/100 Warranty does not apply to vehicles sold for certain commercial uses or to SRT including Viper models. See your retailer for details.

Chrysler Financial

Chrysler Financial offers a variety of finance options, geared to both personal and business vehicle use. Visit chryslerfinancial.ca for a complete review of your financing options. You can calculate your budget, estimate your monthly payments and even apply for credit online. Not sure which vehicles fit within your budget? Simply enter your desired monthly payment into "What Can I Drive?" and a list of vehicles will be displayed. It's just another way that Chrysler Financial makes your life easier.

1-800-361-3700 | dodge.ca PRINTED IN CANADA 5205-C-274E

GRAB LIFE BY THE HORNS



DODGE